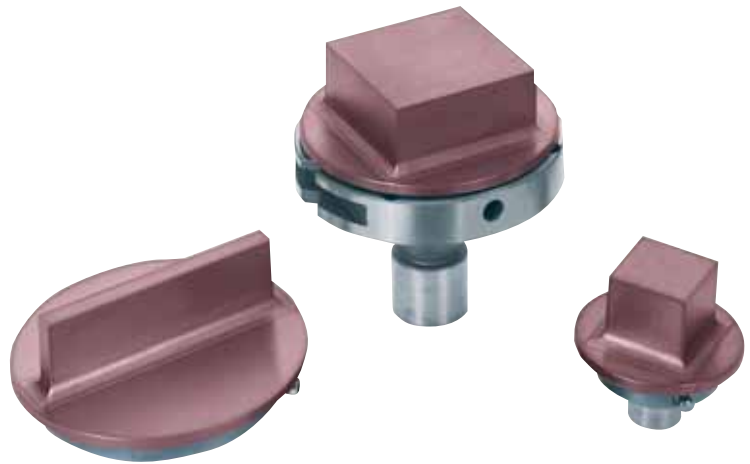


The New Standard In Tooling Performance!

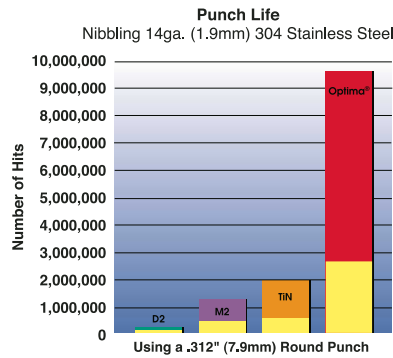
Optima® is a proprietary TiCN (titanium carbo-nitride) coating that was custom engineered at our in-house coating facilities. It features unique properties that significantly enhance turret tooling performance. Optima®, which is available only to Wilson Tool customers, provides a level of surface hardness, wear resistance and lubricity never before associated with coated or uncoated turret punch press tooling.



Some of the many benefits you will enjoy with our Optima® coating include:

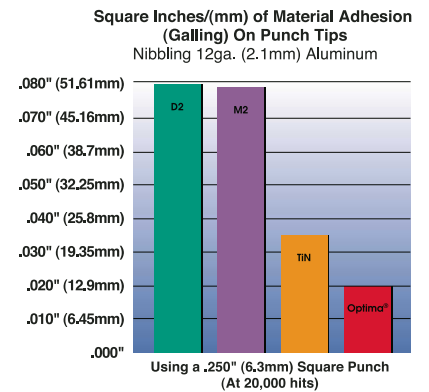
- ▼ Longer tool life
- ▼ Increased wear resistance
- ▼ More hits between sharpenings
- ▼ Reduced adhesion (galling)
- ▼ Reduced slug pulling
- ▼ Reduced corner breakdown
- ▼ Improved special tooling performance
- ▼ Lower overall tooling costs
- ▼ In-house coating facilities allow us to deliver faster and maintain total quality control

Punch Life

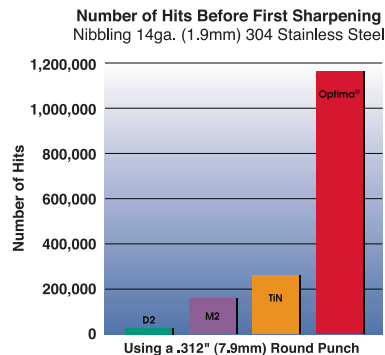


The yellow area indicates actual results achieved through three tool sharpenings of .010" (0.25mm) each. The complete graph indicates projected results with a total of .236" (6mm) removed for sharpening.

Material Adhesion



Number of Hits



Tip Wear

