

**APPLICATIONS**

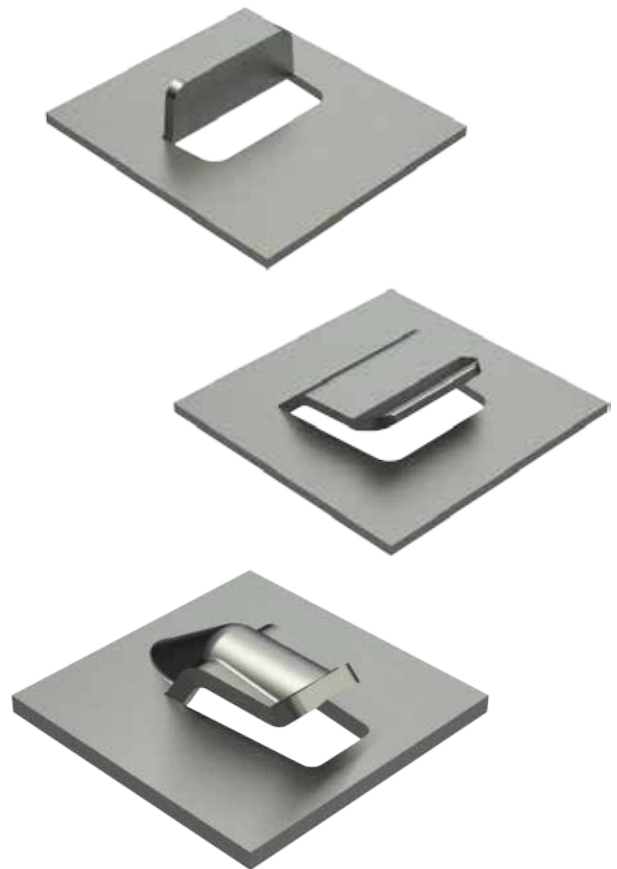
Lance and Forms are used for a variety of applications, including air flow, decoration, location markers, shear tabs, wire harnesses and clip attachments.

**FEATURES**

- High-quality lance and forms are assured with Wilson’s positive form and self-stripping design.
- Optima coating available for extending tool life.
- All tools are tested and inspected before shipping.

**INFORMATION NEEDED**

- Machine model
- Material thickness and type
- Drawing with dimensions and pattern if relief is required.
- A taper of 5° per side should be added (if possible) to aid in stripping large station lance and forms.



| Tool Type     | WITH STRIPPING |          | W/O STRIPPING |
|---------------|----------------|----------|---------------|
|               | Cat. No.       | Cat. No. | Cat. No.      |
|               | Size I         | Size II  | Size II       |
| Single Bridge | 25146          | 25114    | 25196         |
| Double Bridge | N/A            | 25075    | -             |

| LANCE & FORM LESS THAN 90° |          | LANCE AND FORM OF 90° |          |
|----------------------------|----------|-----------------------|----------|
| Tool Type                  | Cat. No. | Tool Type             | Cat. No. |
| Size II                    | 25133    | Size I1               | 25463    |

