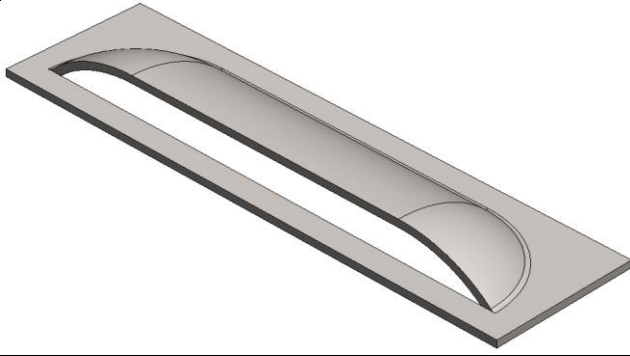


# Louvre - Closed End



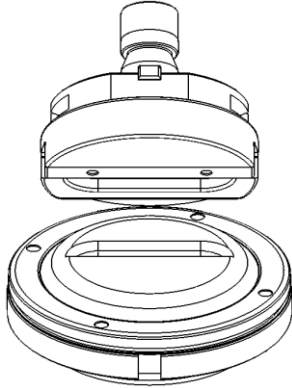
### Typical Applications:-

- Ventilation & air flow

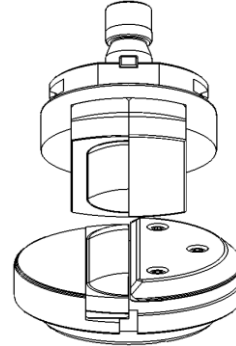
### Wilson Advantages:-

- Built-in alignment ring
- Replaceable cutting components makes tool economical
- Reversible punch cutting blade provides 4 cutting edges
- Optima™ coated cutting inserts as standard
- Premium quality steels
- Sprung die cap to protect tool, reduce scratches and allow sheet safe movement over tool

Standard



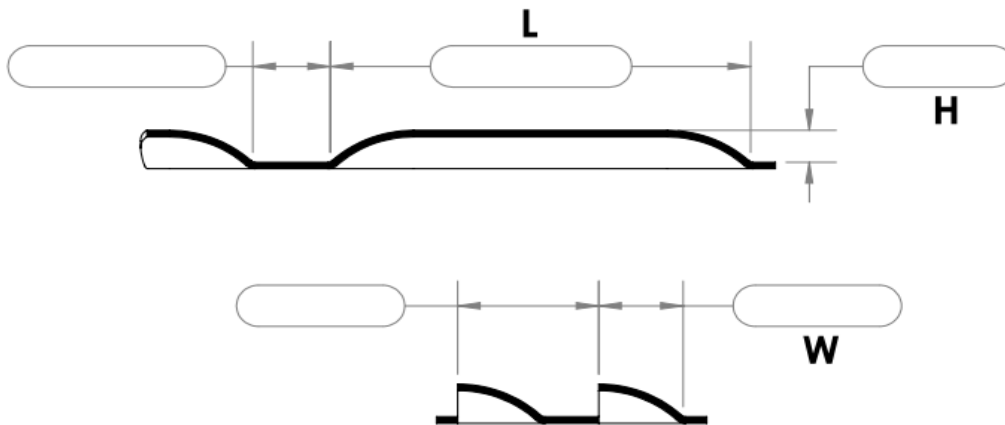
A-Plus Series™



Note: A-Plus Tooling Cartridge Also Needed #26296

| SIZE           | Cat No° | Price   | Delivery | Cat No° | Delivery | Price   |
|----------------|---------|---------|----------|---------|----------|---------|
| L60 X W12 X H5 | 25130   | € 1,397 | 2 Days   | 26287   | 5 Days   | € 2,427 |
| L = 40 to 60   | 26695   | € 1,591 | 7 Days   |         |          |         |
| L = 60 to 72   | 26707   | € 1,962 |          |         |          |         |

Alternatively send a CAD file or drawing in any format of your choice



Company Name:-

Customer Number (If Known):-

Contact Person:-

- Quote Only  
 Order Number (Specify)

Machine Type & Model:-

Material Type:-

- AL     MS     SS  
 Other \_\_\_\_\_

Sheet Thickness (S):-

OptiGlide Die Cap:-

- Yes (adds £50 & 1 extra day)  
 No

Coating Option

- Optima - Standard  
 WearBeater - Optional

A-Plus Cartridge Required:-

- Yes (Req'd for 26287 only)  
 No

Tool ID Marking (Specify):-

### Maximum Dimensions

for applications exceeding these sizes please contact us for alternative solutions (price & delivery indicated may vary)

S = Sheet Thickness (SS = Stainless Steel)

|   | 26695        | 26707 | 26287 |
|---|--------------|-------|-------|
| L | 60           | 72    | 101   |
| W | 19           |       |       |
| H | 6.5          |       |       |
| S | 3.0 (2.0 SS) |       |       |

### Ordering Tips & Advice:-

- **Important - Advise if any specific tolerances apply to any dimensions**
- Other louvre options available, continuous, open ended etc...
- For best results try to keep the width a minimum 2 to 3 times the height
- For best results try to keep the height a maximum 5 times sheet thickness for mild steel or 4 times for aluminium and stainless steel
- Lubricate the sheet prior to forming using Xcel™ spray to help the material flow more easily
- Consider OptiGlide™ die cap to reduce sheet marking on the underside of the sheet (adds £50 & 1 extra day)
- Coated inserts improve performance by reducing galling and improving surface hardness to increase hit count between regrinds - **WearBeater™ recommended for aluminium only (adds 1 extra day)**
- Ultima™ powdered steel inserts help further enhance cutting edge longevity to maximise tool life