

TRUMPF® STYLE CARTRIDGE

CARTUS PORT-SCULE PENTRU MASINI DE STANTAT TRUMPF®

A strong and lightweight alternative

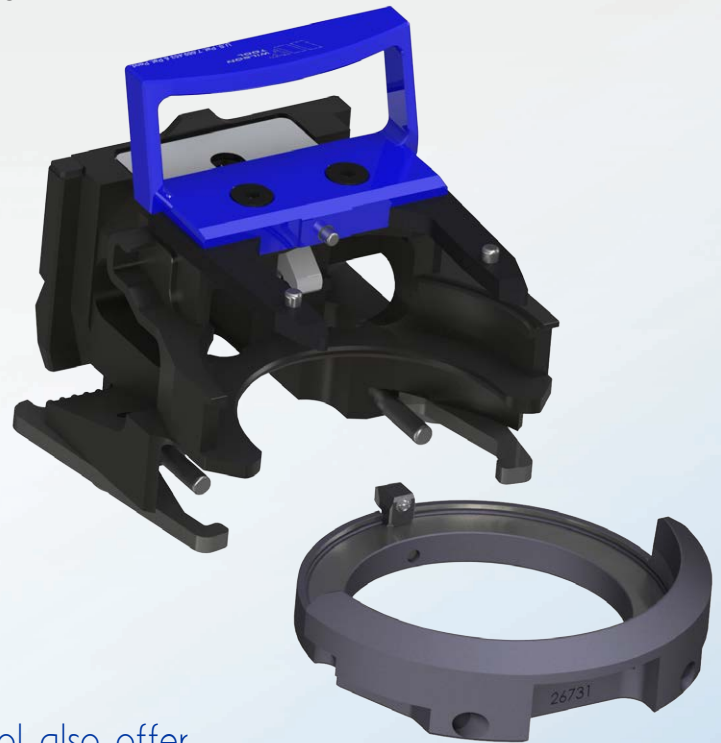
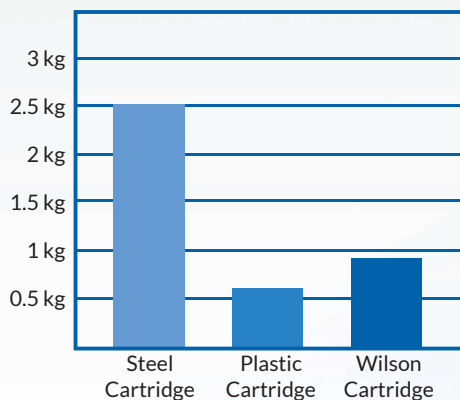
Enhance your punch press productivity with new Trumpf® style tool cartridges from Wilson Tool. Designed for strength and performance, the Wilson Tool Trumpf® style cartridge* is constructed from 6061 T6 aluminium - a strong yet lightweight alternative to plastic or steel cartridges.

**patent pending*

For more information, contact your sales engineer or call our sales desk on:
free phone 0800 373748, free fax 0800 373758
or Ireland free phone 1-800 709009 and free fax 1-800 535538.

Internationally, please call +44 (0)1793 831818
or fax +44 (0)1793 831945.

Cartridge Weight Comparison



Wilson Tool also offer
a tough, cost-effective
Trumpf® style die shoe

| DESCRIPTION | CAT. NO. |
|---|----------|
| Trumpf® Style Tool Cartridge (Full Assembly excluding Die Shoe) | 26838 |
| Trumpf® Style GL Die Shoe Assembly | 26731 |