

# INTRODUCING THE...

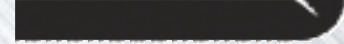


Distributor:  
S.C. SM TECH S.R.L.  
[www.sm-tech.ro](http://www.sm-tech.ro)  
[www.wilsontool.ro](http://www.wilsontool.ro)  
office @ sm-tech.ro  
Tel: 0374-991480  
Tel mob: 0745-528494

## ROLLING EASY BEND WHEEL TOOL



Sample plate before bend

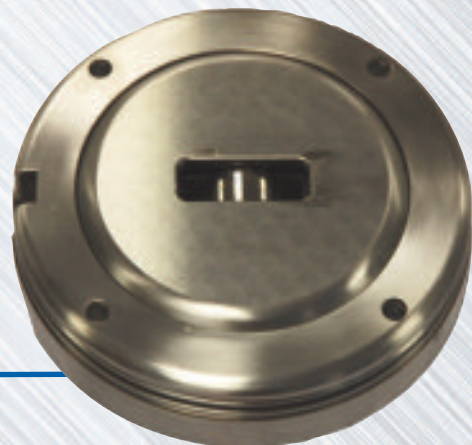


Sample plate after bend

The Rolling Easy Bend Wheel Tool rolls a 95° groove on one side.

It is used to score a "V" in material for components to be bent without the use of a press brake.

The bottom wheel is blank to create the one sided slit.



It is possible for material up to 1.0 ST/ST and 1.5 mild steel/aluminum to be bent by hand.

### Ranges of material:

- 0.8 - 1.0mm stainless steel
- 0.8 - 1.5mm mild steel
- 0.8 - 1.5mm aluminium

Note: This tool can be adapted to produce a Rolling Pincher Tool with the purchase of a single set of wheels.

Wilson Tool International Ltd. Stirling Road, South Marston Industrial Estate, Swindon, Wiltshire SN3 4TQ  
Free phone: 0800 373748 Tel: +44 [0] 1793 831818 Tel free: 1-800 70 90 09 Ireland  
Free fax: 0800 373758 Fax: +44 [0] 1793 831945 Fax free: 1-800 53 55 38 Ireland  
[www.wilsontool.com](http://www.wilsontool.com) [sales@wilsontool.eu.com](mailto:sales@wilsontool.eu.com)